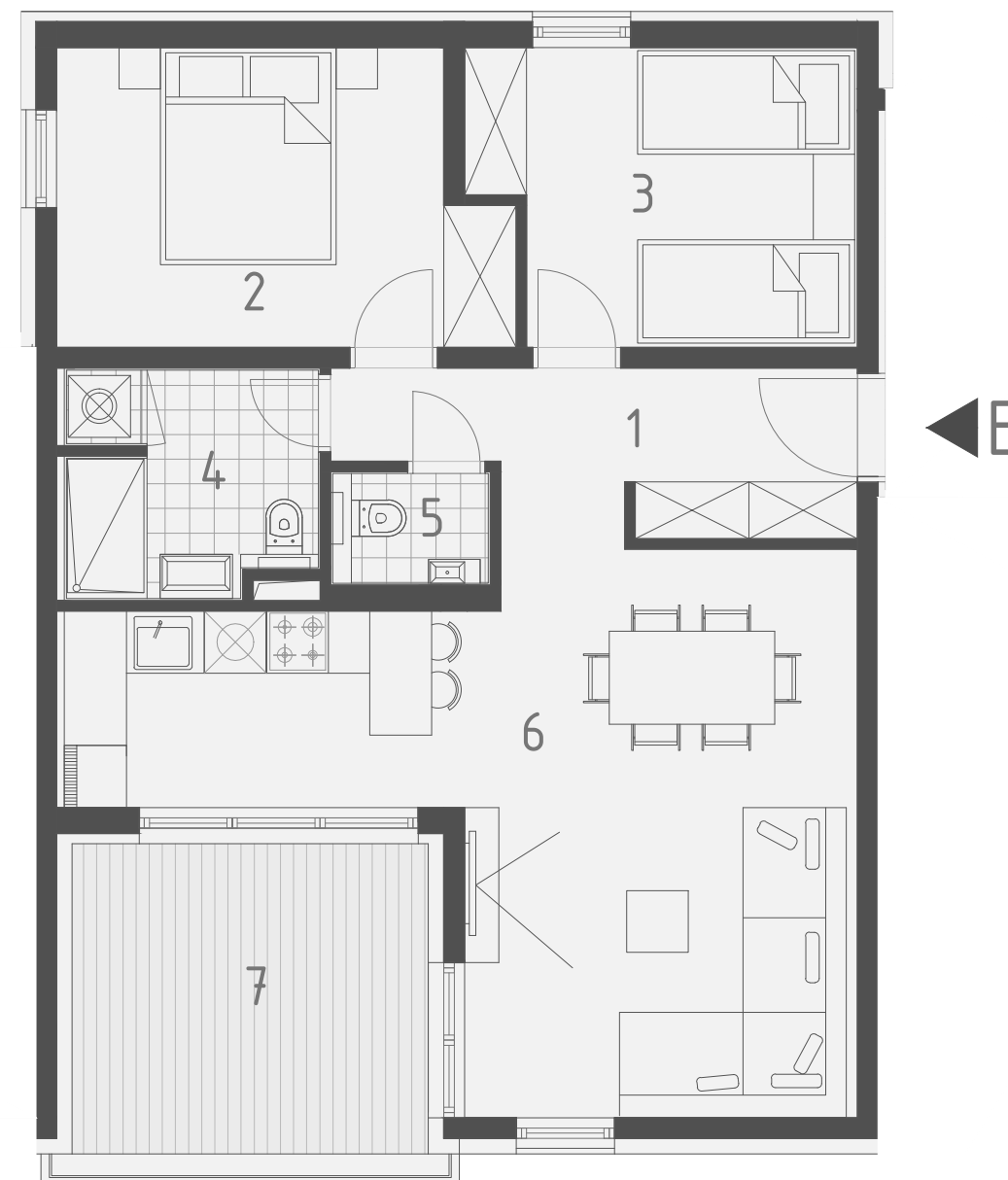
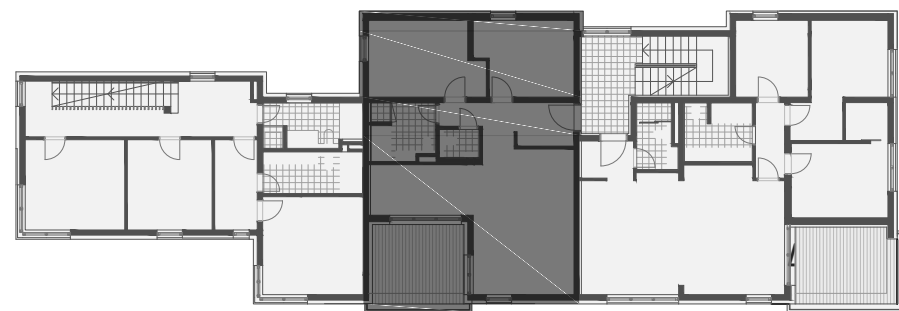


# TLOCRT 1. KATA

0 1 2 5



STAN E	netto m <sup>2</sup>	NKP m <sup>2</sup>
1 ulazni prostor	6,46	6,46
2 spavaća soba 1	11,83	11,83
3 spavaća soba 2	10,14	10,14
4 kupaonica	5,27	5,27
5 wc	1,70	1,70
6 dnevni boravak, kuhinja i blagovaonica	28,83	28,83
7 natkrivena terasa	11,14	8,16
<b>UKUPNO STAN E</b>	<b>75,37</b>	<b>72,39</b>

STAN E - PRIPADAK	m <sup>2</sup>
e1 spremište	2,10
e2 parkirno mjesto	16,50